

# Handheld Megohmmeters

Models 6522, 6524, 6526, 6532, 6534 & 6536

Insulation Resistance Testers  
Including Multimeter Functions



## Easy To Use

- Selectable test voltages from 10 to 1000V (model dependent)
- Insulation resistance measurement up to 200G $\Omega$  (model dependent)
- Automatic discharge at the completion of the test
- Manual, Lock & Timer test modes
- PI / DAR Ratio calculations (model dependent)
- Active voltmeter detects live voltage prior to starting a test
- Automatic test inhibition if live voltage above 25 volts detected
- 200mA / 20mA continuity measurement with active protection without fuses
- Measures V (AC & DC), Hz,  $\Omega$ , k $\Omega$ , capacitance and cable length (model dependent)
- $\Delta$ REL mode for comparative measurements displayed as a value or %
- Test lead compensation eliminates lead resistance from continuity measurements
- Data storage of test results (model dependent)
- Computer report generation of test results (model dependent)



Our products are backed by over 100 years of experience in test and measurement equipment, and encompass the latest international standards for quality and safety.

Technical Hotline: (800) 343-1391  
[www.aemc.com](http://www.aemc.com)



### MODELS 6522, 6524 and 6526

Ideal for testing cables, small motors, pumps, transformers and industrial equipment



Model 6522



Model 6524



Model 6526



### ▼ FEATURES

- Simple to use, handheld, compact and lightweight
- General purpose multimeter functions including voltage, frequency, resistance, continuity and capacitance (model dependent)
- Spot test and timed insulation resistance measurement
- PI and DAR ratios calculated to determine the quality of the insulation independent of ambient temperature (model dependent)
- ΔREL function enables measurement of the difference between a reference value and new measured value (Models 6524 and 6526)
- Data storage allows comparison of results with previous test and report generation (Models 6524 and 6526)
- Alarms with Green/Red Pass/Fail indicator light (Model 6526)
- FREE DataView® software for configuring real-time communication with a PC and report generation with pre-defined or user defined templates for use with Model 6526
- Bluetooth (Class 2 wireless communication from up to 30 ft away) with Model 6526



| DESCRIPTION   | CATALOG NO. |
|---|-------------|
| Megohmmeter Model 6522 (Digital w/Analog Bargraph, 250V, 500V, 1000V, Continuity, V) .....  | 2155.51     |
| Megohmmeter Model 6524 (Digital w/Analog Bargraph, Alarm, 50V, 100V, 250V, 500V, 1000V, Ohm, Continuity, V, kΩ, Mem) .....                                      | 2155.52     |
| Megohmmeter Model 6526 (Digital w/Analog Bargraph, Alarm, 50V, 100V, 250V, 500V, 1000V, Ohm, Continuity, V, kΩ, Cap, Mem, Bluetooth w/DataView® Software) ..... | 2155.53     |

## MODEL 6532



Ideal for insulation measurements on communication cables, Ethernet cables and other low voltage DC wiring

### ▼ FEATURES

- Simple to use, handheld, compact and lightweight
- 50 or 100V insulation test voltage selection
- Insulation resistance measurement up to 20GΩ
- Measures resistance, capacitance, leakage current, AC voltage and frequency
- ΔREL function enables measurement of the difference between a reference value and new measured value
- Measure and display cable length up to 328,084 ft (100km)
- FREE DataView® software for configuring real-time communication with a PC and report generation with pre-defined or user defined templates
- Bluetooth (Class 2 wireless communication from up to 30 ft away)



## MODEL 6534

Ideal for insulation measurements on electronic components and circuits, Ethernet cables and other low voltage DC wiring

### ▼ FEATURES

- Simple to use, handheld, compact and lightweight
- 10 to 500V insulation test voltage selection
- Insulation resistance measurement from 2kΩ to 50GΩ
- Compatible with the specific requirements of the electronics industry for both low current applications and power stages
- ΔREL function enables measurement of the difference between a reference value and new measured value
- FREE DataView® software for configuring real-time communication with a PC and report generation with pre-defined or user defined templates
- Bluetooth (Class 2 wireless communication from up to 30 ft away)
- General purpose multimeter functions including voltage, resistance & continuity



#### DESCRIPTION

#### CATALOG NO.

|  |         |
|--|---------|
| Megohmmeter Model 6532 (Digital w/Analog Bargraph, Alarm, 50V, 100V, Ohm, Continuity, V, kΩ, Cap, Mem, Bluetooth w/DataView® Software).....              | 2155.54 |
| Megohmmeter Model 6534 (Digital w/Analog Bargraph, Alarm, 10V, 25V, 100V, 250V, 500V, Ohm, Continuity, V, kΩ, Mem, Bluetooth w/DataView® Software) ..... | 2155.55 |

## MODEL 6536

**Ideal for special applications in the aerospace and defense sectors and for ESD testing where specific test voltages are required**

### ▼ FEATURES

- Simple to use, handheld, compact and lightweight
- Variable test voltage selection from 10 to 100V in 1V increments
- Insulation resistance measurement from 2kΩ to 20GΩ
- Covers the specific requirements which require a low test voltage and strict adherence to testing procedures
- ΔREL function enables measurement of the difference between a reference value and new measured value
- Test lead compensation eliminates lead resistance from continuity measurements
- General purpose multimeter functions including voltage resistance and continuity
- Available in an optional ESD Floor Test Kit



| DESCRIPTION   | CATALOG NO. |
|---|-------------|
| Megohmmeter Model 6536 (Digital w/Analog Bargraph, Alarm, Variable 10V to 100V, Ohm, Continuity, V, kΩ) ..... | 2155.96     |
| Megohmmeter Model 6536 ESD Floor Test Kit .....   | 2155.97     |

### ▼ HOW TO CHOOSE THE RIGHT MEGOHMMETER FOR YOUR APPLICATION NEEDS

|                                | 6522                    | 6524                 | 6526  | 6532    | 6534               | 6536                        |
|--------------------------------|-------------------------|----------------------|-------|---------|--------------------|-----------------------------|
| <b>FUNCTIONS</b>               |                         |                      |       |         |                    |                             |
| Applications                   | Industrial Maintenance  |                      |       | Telecom | Electronics / ESD  | Special                     |
| Test voltage                   | 250-500-1000V           | 50-100-250-500-1000V |       | 50-100V | 10-25-100-250-500V | 10 to 100V<br>1V Increments |
| Range                          | 40GΩ                    | 200GΩ                | 200GΩ | 20GΩ    | 50GΩ               | 20GΩ                        |
| Leakage Current                | —                       | ◆                    | ◆     | ◆       | ◆                  | ◆                           |
| Manual / Lock / Duration Modes | ◆                       | ◆                    | ◆     | ◆       | ◆                  | ◆                           |
| PI / DAR Ratios                | —                       | ◆                    | ◆     | ◆       | —                  | —                           |
| Alarms                         | —                       | ◆                    | ◆     | ◆       | ◆                  | ◆                           |
| ΔREL                           | —                       | ◆                    | ◆     | ◆       | ◆                  | ◆                           |
| Continuity                     | ◆                       | ◆                    | ◆     | ◆       | ◆                  | ◆                           |
| Voltage                        | ◆                       | ◆                    | ◆     | ◆       | ◆                  | ◆                           |
| Frequency                      | —                       | ◆                    | ◆     | ◆       | —                  | —                           |
| Resistance                     | —                       | ◆                    | ◆     | ◆       | ◆                  | ◆                           |
| Capacitance                    | —                       | —                    | ◆     | ◆       | —                  | —                           |
| Cable Length                   | —                       | —                    | —     | ◆       | —                  | —                           |
| Magnetic Mounting              | —                       | ◆                    | ◆     | ◆       | ◆                  | ◆                           |
| Data Storage                   | —                       | ◆                    | ◆     | ◆       | ◆                  | —                           |
| Bluetooth Communication        | —                       | —                    | ◆     | ◆       | ◆                  | —                           |
| Remote Probe Compatible        | ◆                       | ◆                    | ◆     | ◆       | ◆                  | ◆                           |
| Categories                     | 600V CAT IV             |                      |       |         |                    |                             |
| Display                        | Dual Line with Bargraph |                      |       |         |                    |                             |

# SPECIFICATIONS

## 1000V Models

DARPI T1T2

# MEGOHMMETERS

| SPECIFICATIONS                            | 6522  | 6524   | 6526   | 6532        | 6534                       | 6536                           |
|---|---|--|--|-------------|----------------------------|--------------------------------|
| <b>INSULATION TESTS</b>                   |   |  |  |             |                            |                                |
| Test Voltages                             | 250V, 500V, 1000V   | 50V, 100V, 250V, 500V, 1000V   |  | 50V, 100V   | 10V, 50V, 100V, 250V, 500V | Variable 10 to 100V (1V steps) |
| Measurement Range:                        |   |  |  |             |                            |                                |
| <b>10V</b>                                | –   | –  | –  | –           | 2k to 1GΩ                  | 2k to 2GΩ                      |
| <b>25V</b>                                | –   | –  | –  | –           | 5k to 2GΩ                  | 5kΩ to 5GΩ                     |
| <b>50V</b>                                | –   | 10k to 10GΩ  |  | 10k to 10GΩ | –                          | 10kΩ to 10GΩ                   |
| <b>100V</b>                               | –   | 20k to 20GΩ  |  | 20k to 20GΩ | 20k to 10GΩ                | 20k to 20GΩ                    |
| <b>250V</b>                               | 50k to 10GΩ   | 50k to 50GΩ  |  | –           | 50k to 25GΩ                | –                              |
| <b>500V</b>                               | 100k to 20GΩ  | 100k to 100GΩ  |  | –           | 100k to 50GΩ               | –                              |
| <b>1000V</b>                              | 200k to 40GΩ  | 200k to 200GΩ  |  | –           | –                          | –                              |
| Variable Test Voltage                     | –   | –  | –  | –           | –                          | (V/5)kΩ - (V/5)GΩ              |
| Measurement Range/Resolution              | 10 <sup>(1)</sup> to 999kΩ and 1.000 to 3.999MΩ / 1kΩ; 4.00 to 39.99MΩ / 10kΩ; 4.00 to 399.9MΩ / 100kΩ; 400 to 3.999GΩ / 1MΩ; 4.00 to 39.99GΩ / 10MΩ; 40.0 to 200GΩ / 100MΩ |  |  |             |                            |                                |
| Accuracy                                  | ±(3% + 2cts) <sup>(2)</sup>   |  |  |             |                            | ±(3% + 2cts) <sup>(3)</sup>    |
| Test Voltage (I < 1 mA)                   | 0% + 20%  |  |  |             |                            | ±0.5V                          |
| Test Voltage Accuracy                     | ±(3% + 3cts)  |  |  |             |                            |                                |
| Test Current Display/Resolution           | –   | 0.01 to 39.99μA / 10nA; 40.0 to 399.9μA / 100nA; 0.400 to 2.000mA / 1μA  |  |             |                            |                                |
| Test Current Accuracy                     | –   | ±(10% + 3cts)  |  |             |                            |                                |
| PI/DAR Ratios                             | –   | Yes  | Yes  | Yes         | –                          | –                              |
| Test Lock                                 | Yes   |  |  |             |                            |                                |
| Timer (min:s)                             | 0 to 40min  | 0 to 40min   | 0 to 40min   | 0 to 40min  | 0 to 40min                 | 0 to 40min                     |
| Discharge Time (at 25V)                   | < 2 s/μF  |  |  |             |                            |                                |
| Automatic Test Inhibit                    | If live voltage > 25V detected  |  |  |             |                            |                                |
| Alarms                                    | 2 fixed thresholds + 1 programmable threshold   |  |  |             |                            |                                |
| IEC 61557                                 | Yes   | Up to 2G   |  |             | 2GΩ                        | 2GΩ                            |
| <b>VOLTAGE</b>                            |   |  |  |             |                            |                                |
| Measurement Range/Resolution              | 0.3 to 399.9V / 0.1V; 400 to 700V / 1V  |  |  |             |                            |                                |
| Accuracy/Input Impedance                  | ±(3% + 2cts) / 400kΩz   |  |  |             |                            |                                |
| Operating Frequency                       | DC; 15.3 to 800Hz   |  |  |             |                            |                                |
| <b>FREQUENCY</b>                          |   |  |  |             |                            |                                |
| Measurement Range / Resolution / Accuracy | –   | 15.3 to 399.9Hz / 0.1Hz / ±(1% + 2cts); 400 to 800Hz / 1Hz / ±(1% + 1ct)   |  |             | –                          | –                              |
| <b>CONTINUITY</b>                         |   |  |  |             |                            |                                |
| Measurement Range / Test Current          | 0.00Ω - 10.00Ω (200mA)  | 0.00 to 10.00Ω (200mA); 0.0 to 100.0Ω (20mA)   |  |             |                            |                                |
| Accuracy/Open Circuit Voltage             | ±(2% + 2cts) / ≥ 6V   |  |  |             |                            |                                |
| Measurement Current                       | 200mA range: 200mA (-0mA + 20mA); 20mA range: 20mA ± 5mA  |  |  |             |                            |                                |
| Continuity Thresholds (Quick Beep)        | 2Ω fixed  | 2Ω, 1Ω, programmable threshold   |  |             |                            |                                |
| Lead Compensation                         | up to 9.99Ω   |  |  |             |                            |                                |
| <b>RESISTANCE</b>                         |   |  |  |             |                            |                                |
| Measurement Range/Resolution/Accuracy     | –   | 0 to 3999Ω / 1Ω; 4.00k to 39.99kΩ / 10Ω / ±(3% + 2cts)<br>40.0k to 399.9kΩ / 100Ω; 400k to 1000kΩ / 1kΩ / ±(3% + 2cts) |  |             |                            |                                |
| <b>CAPACITANCE</b>                        |   |  |  |             |                            |                                |
| Measurement Range/Resolution              | –   | –  | 0.1 to 399.9nF / 0.1nF, 400 to 3999nF / 1nF<br>4.00 to 10.0μF / 10nF |             | –                          | –                              |
| Accuracy                                  | –   | –  | ±(3% + 2cts)   |             |                            |                                |
| Cable Length Measurement                  | –   | –  | –  | 0 to 100km  | –                          | –                              |
| <b>GENERAL SPECIFICATIONS</b>             |   |  |  |             |                            |                                |
| Display                                   | 2 line 4000cts + logarithmic bargraph; with backlight   |  |  |             |                            |                                |
| Storage                                   | –   | 300 measurements   | 1300 measurements  |             |                            | –                              |
| Communication                             | –   | –  | Bluetooth, Class II (approximately 30 ft)                            |             |                            |                                |
| Power Supply                              | 6 x AA Alkaline batteries   |  |  |             |                            |                                |
| DataView® Software                        | –   | –  | Included   | Included    | Included                   | –                              |
| Auto Power OFF                            | Yes   |  |  |             |                            |                                |
| Dimensions/Weight                         | 8.30 x 4.25 x 2.36" (211 x 108 x 60mm) / 1.873lb (850g)   |  |  |             |                            |                                |
| IP Rating                                 | IP 54 / IK 04   |  |  |             |                            |                                |
| Safety Rating/CE Rating                   | IEC 61326 - 1 / IEC 61010 - 1 and IEC 61010 - 2 - 030, 600V CAT IV  |  |  |             |                            |                                |
| Compliance With Standards                 | IEC 61557 parts 1, 2, 4 and 10  |  |  |             |                            |                                |

(1) 2kΩ for Models 6532, 6534 & 6536 (2) To be added: 10V: 1% per 0.1GΩ; 25V: 0.4% per 0.1GΩ; 50V: 2% per GΩ; 100V: 1% per GΩ; 250V: 0.4% per GΩ; 500V: 0.2% per GΩ; 1000V: 0.1% per GΩ (3) 10% / U<sub>n</sub> is added per 100MΩ

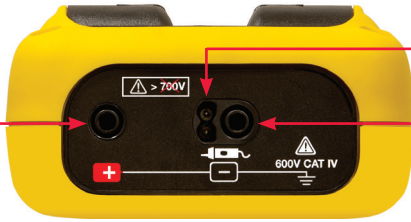
# MEGOHMMETERS

## FRONT/TOP PANEL & FUNCTIONAL DISPLAYS

Model Dependent

### TOP PANEL ▶

+  
Input terminal



Remote probe connection  
-  
Input terminal

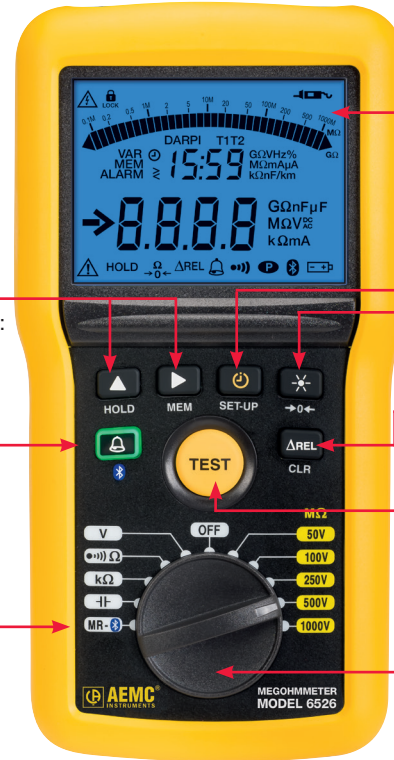
### FRONT PANEL ▼

Navigation Buttons:

- Display instrument information
- Turn buzzer on or off
- Turn power save on or off
- Program test time
- Select displayed parameters
- Program alarm set points

Secondary Function:

- Hold
- Data storage



Blue backlit LCD

Access to instrument information & setup / Timer activation

Test lead resistance compensation / Backlight

ΔREL set and compare multimeter measurements to a reference value

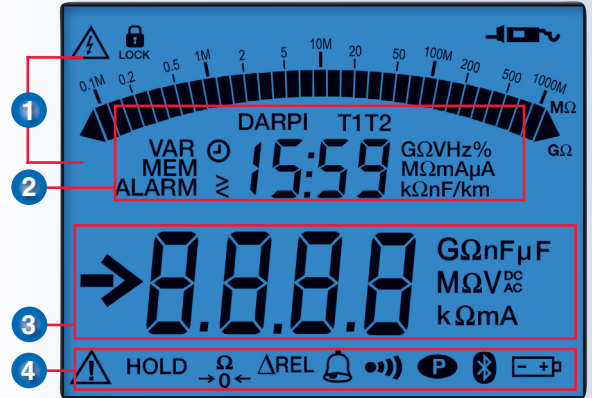
TEST button

Test function selection switch

Alarm activation / Deactivation

Memory recall/  
Bluetooth activation

### ▼ FUNCTIONAL DISPLAY



- 1 Bargraph display of insulation measurement
- 2 Secondary display
- 3 Main display
- 4 Function indicators

**NOTE:**  
Buttons & Functions  
Are Model  
Dependent

| KEY           | FUNCTION   |
|---------------|--|
|               | Select the LOCK, TIMER, PI or DAR functions  |
|               | Switch the display back lighting on and off  |
| <b>HOLD</b>   | Freeze / unfreeze the measurement display  |
| <b>SET UP</b> | Configure user programmable functions  |
| <b>→ 0 ←</b>  | Eliminate test lead resistance from continuity measurement   |
|               | Models 6524, 6526, 6532, 6534 and 6536 - the ALARM key is used to activate / deactivate the alarms. Model 6526 - the ALARM key also has a two-color (green and red) indicator to indicate pass/fail conditions   |
|               | Select test time, voltage or test current results to show on the secondary display: <ul style="list-style-type: none"> <li>• Program test duration for insulation measurements</li> <li>• Choose 200 or 20mA continuity test current</li> <li>• Program alarm thresholds for Models 6524, 6526, 6532 and 6534</li> </ul> |
| <b>ΔREL</b>   | ΔREL key is used to display the measurement from which a stored reference measurement is subtracted (Models 6524, 6526, 6532 and 6534)   |
| <b>MEM</b>    | MEM key is used to store measurements (Models 6524, 6526, 6532 and 6534)   |
| <b>CLR</b>    | CLR key is used to erase stored measurements (Models 6524, 6526, 6532 and 6534)  |
|               | Activate/deactivate Bluetooth wireless communication (Models 6526, 6532 and 6534)  |



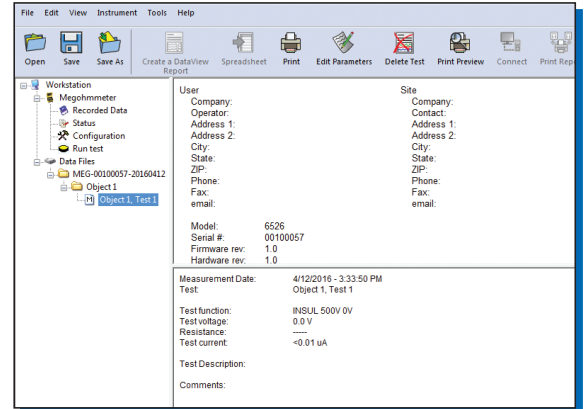
# DataView®

## Data Analysis & Reporting Software

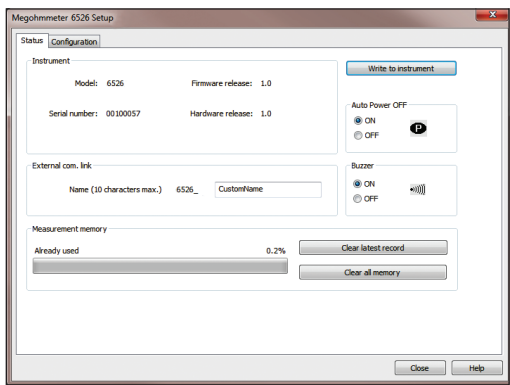
**DataView® Software** automatically recognizes the instrument when it is connected to the PC and opens the corresponding control panel. The tree structure menu offers users direct access to the data recorded in the instrument and its configuration.

### Other Functions Available:

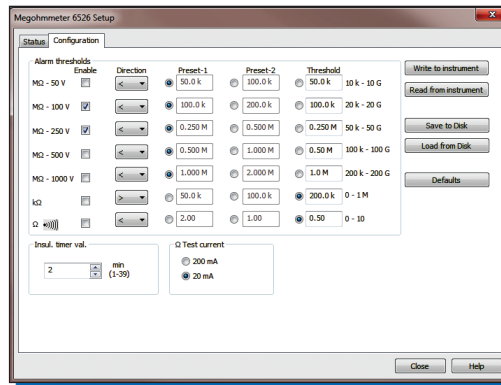
- Start and stop tests for your PC
- Real-time display of active tests
- DAR and PI ratio programming and display
- Graphical plot of the tests
- Generate reports from test results



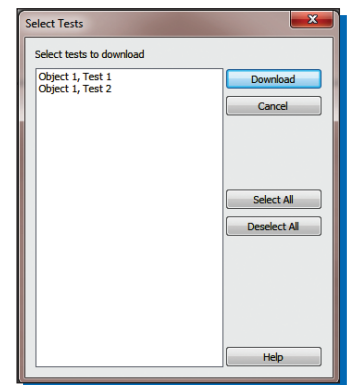
Tree structured status screen provides the ability to select connected instruments, configure instruments, see the instrument's status and review stored test results.



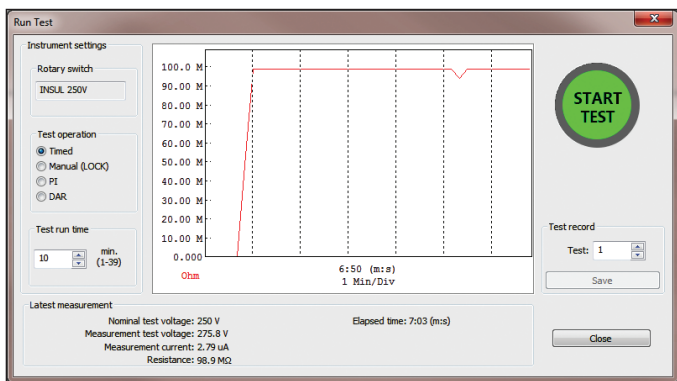
Status screen allows you to assign a unique name for the instrument and to check and clear memory as needed.



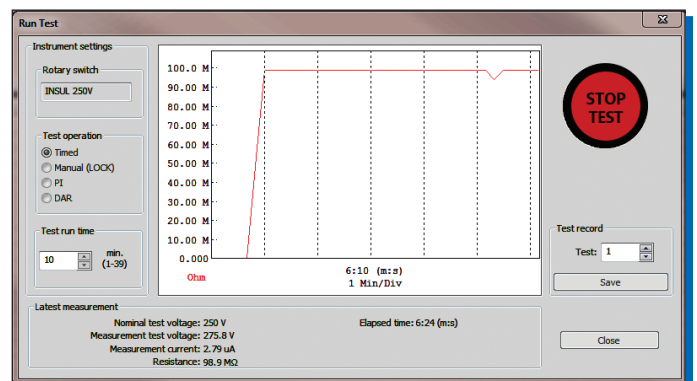
Configuration screen allows you to set alarm levels, test time and to read and write configurations from and to the instrument.



Select individual or multiple tests to download and review on your computer.



Select test conditions and start a test from the PC and display real-time measurement results graphically.



Stop a test in progress and display the test results.

## ▼ ELECTRO STATIC DISCHARGE (ESD) FLOOR TEST KIT

The Model 6536 is also available as a floor kit. The kit contains the meter, two 5 pound (2.3 kg) floor weights, also referred to as NFPA probes, that are in compliance with EOS/ESD 11.11 specifications. Each floor weight is coated with insulative paint and a conductive rubber base. The instrument, floor weights and test leads are packaged in a rugged field case. The kit provides all the necessary elements for compliance with the ANSI/ESD S20-20-2007 standard for testing ESD flooring. The system is ideal for testing both point to ground and point to point ESD flooring measurements.

**Megohmmeter Model 6536 ESD Floor Test Kit**  
Catalog #2155.57



## ▼ OPTIONAL ACCESSORIES

The **Continuity Pole** facilitates continuity measurements on multiple points that are in hard to reach areas or areas in close proximity to dangerous voltages

**Continuity Pole**  
Catalog #2138.54



The **Megohmmeter Test Probe** provides the ability to access test points at distances and places where it is not practical to initiate the test from the front panel of the instrument.

The test button on the probe is active for all Megohmmeter switch positions on the instrument and will initiate an insulation test when pressed

For multimeter functions, the probe is active without the need to press the **Test** button.

The probe is equipped with a flashlight function that can be activated to illuminate the area around the test point.

The probe tip is removable and replaceable.

**Megohmmeter Test Probe**  
Catalog #2155.75



## ▼ ORDERING INFORMATION

| MODEL | CAT. #  | DESCRIPTION   |
|-------|---------|---|
| 6522  | 2155.51 | Soft carrying pouch, two 1.5m test leads (red/black), two alligator clips (red/black), 1 black test probe, 6 AA batteries and user manual   |
| 6524  | 2155.52 | Soft carrying pouch, two 1.5m test leads (red/black), two alligator clips (red/black), 1 black test probe, 6 AA batteries and user manual   |
| 6526  | 2155.53 | Soft carrying pouch, two 1.5m test leads (red/black), two alligator clips (red/black), 1 black test probe, 6 AA batteries, quick start guide and a USB stick with DataView® software and user manual                                |
| 6532  | 2155.54 | Soft carrying pouch, two 1.5m test leads (red/black), two alligator clips (red/black), 1 black test probe, two "grip" probes (red/black), 6 AA batteries, quick start guide and a USB stick with DataView® software and user manual |
| 6534  | 2155.55 | Soft carrying pouch, two 1.5m test leads (red/black), two alligator clips (red/black), 1 black test probe, two "grip" probes (red/black), 6 AA batteries, quick start guide and a USB stick with DataView® software and user manual |
| 6536  | 2155.56 | Soft carrying pouch, two 1.5m test leads (red/black), two alligator clips (red/black), 1 black test probe, two "grip" probes (red/black), 6 AA batteries and user manual  |



Included with Model 6532 & Model 6534  
(batteries and quick start guide, not shown)

### ACCESSORIES

|   | CATALOG NO. |
|---|-------------|
| Megohmmeter Test Probe.....   | 2155.75     |
| Case - Field Case for all Handheld Megohmmeters (Waterproof).....   | 2118.98     |
| Case - Hands Free Carrying Case for all Handheld Megohmmeters ..... | 2118.99     |
| Continuity Pole .....   | 2138.54     |

**You Tube** Visit the AEMC® YouTube page to view a wide range of useful videos for using our products.

Visit our website at [www.aemc.com](http://www.aemc.com)

# AEMC ONE SOURCE®

For All Your Electrical Test & Measurement Instruments

Call the AEMC® Instruments Technical Assistance Hotline for immediate consultation with an applications engineer: (800) 343-1391

Chauvin Arnoux®, Inc. d.b.a AEMC® Instruments • 200 Foxborough Blvd. • Foxborough, MA 02035 USA • (800) 343-1391 • (508) 698-2115 • Fax (508) 698-2118  
Export Department: (603) 749-6434 (ext 520) • Fax (603) 742-2346 • E-mail: [export@aemc.com](mailto:export@aemc.com)